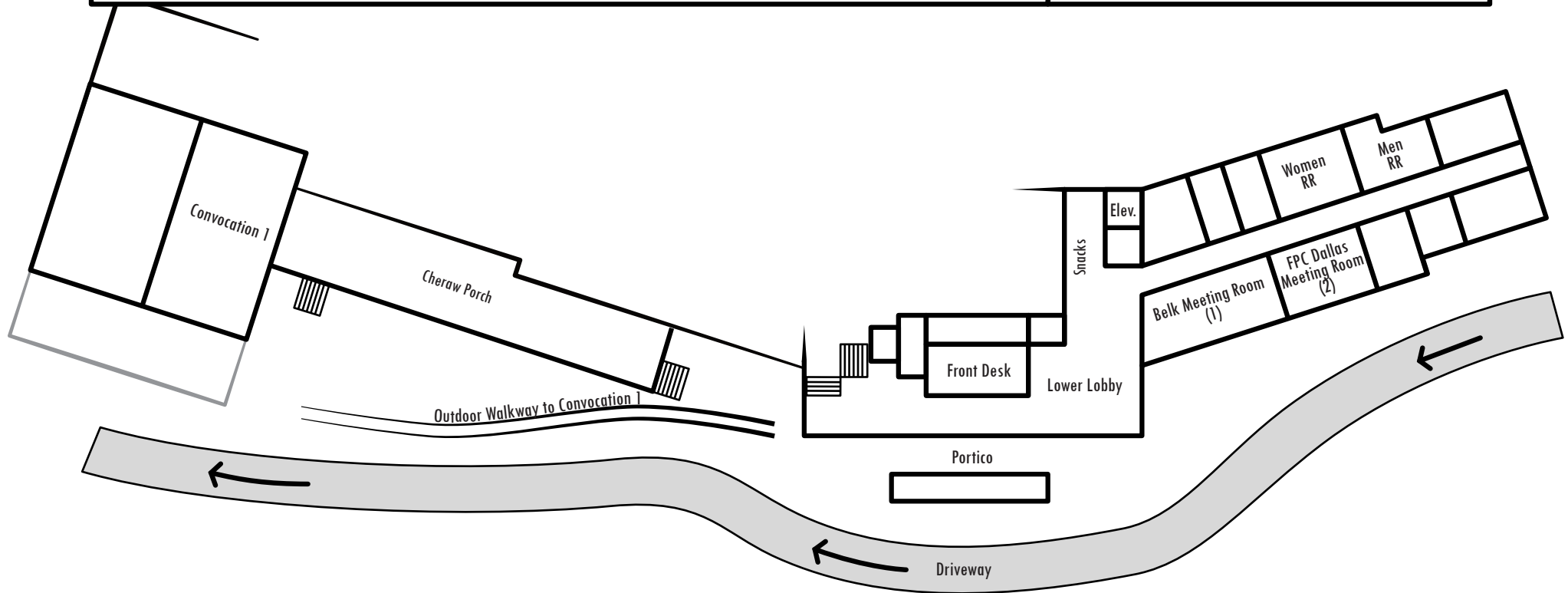


# Assembly Inn Floor Plan

Lower Lobby & Exterior Access

401 Assembly Drive  
Montreat, NC  
28757



Mailing Address: PO Box 969  
Montreat, NC  
28757

Website: [montreat.org](http://montreat.org)

↓  
Front of Building  
Towards Lake Susan

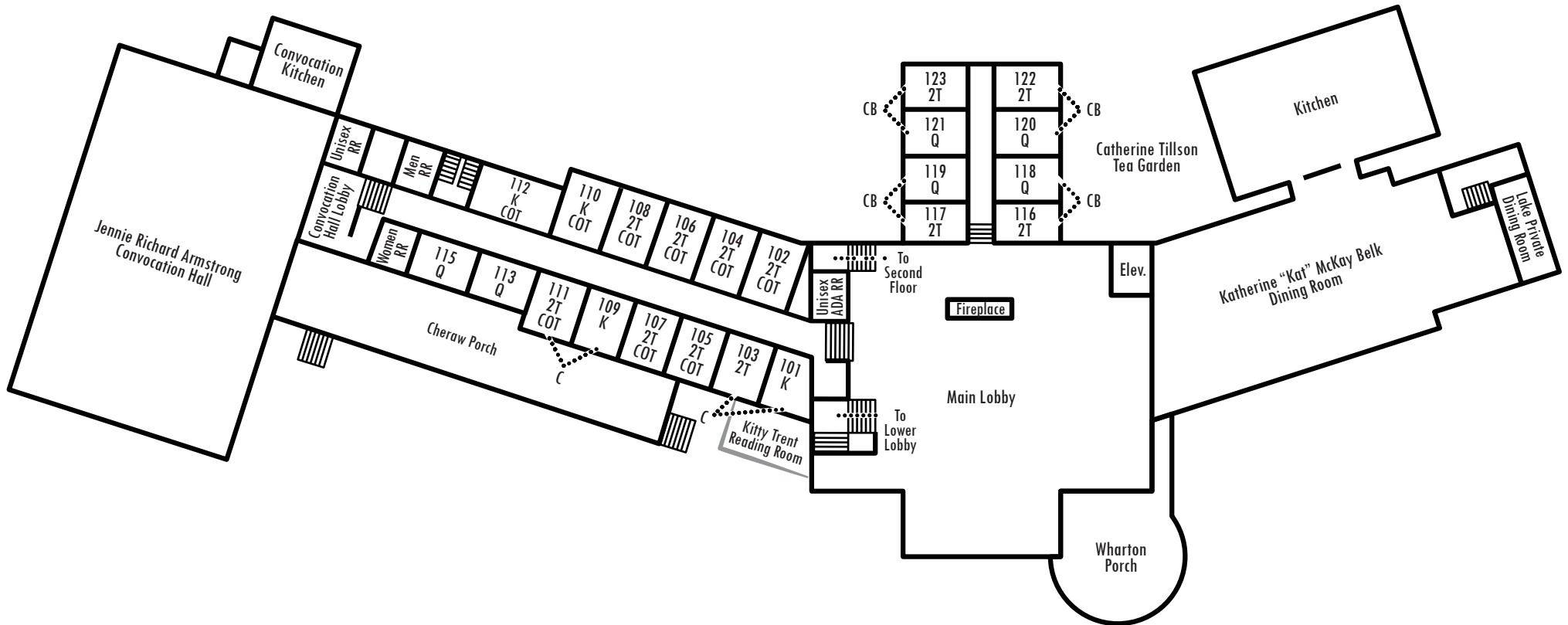
## FLOOR PLAN KEY

- K 1 King Bed
- Q 1 Queen Bed
- 2T 2 Twin Beds
- ADA ADA Room
- C Connecting Room
- CB Connecting Bath
- COT Cot or Crib Accommodation
- RR Restroom

# Assembly Inn Floor Plan

Main Lobby/First Floor

401 Assembly Drive  
Montreat, NC  
28757



Mailing Address: PO Box 969  
Montreat, NC  
28757

Website: [montreat.org](http://montreat.org)

↓  
Front of Building  
Towards Lake Susan

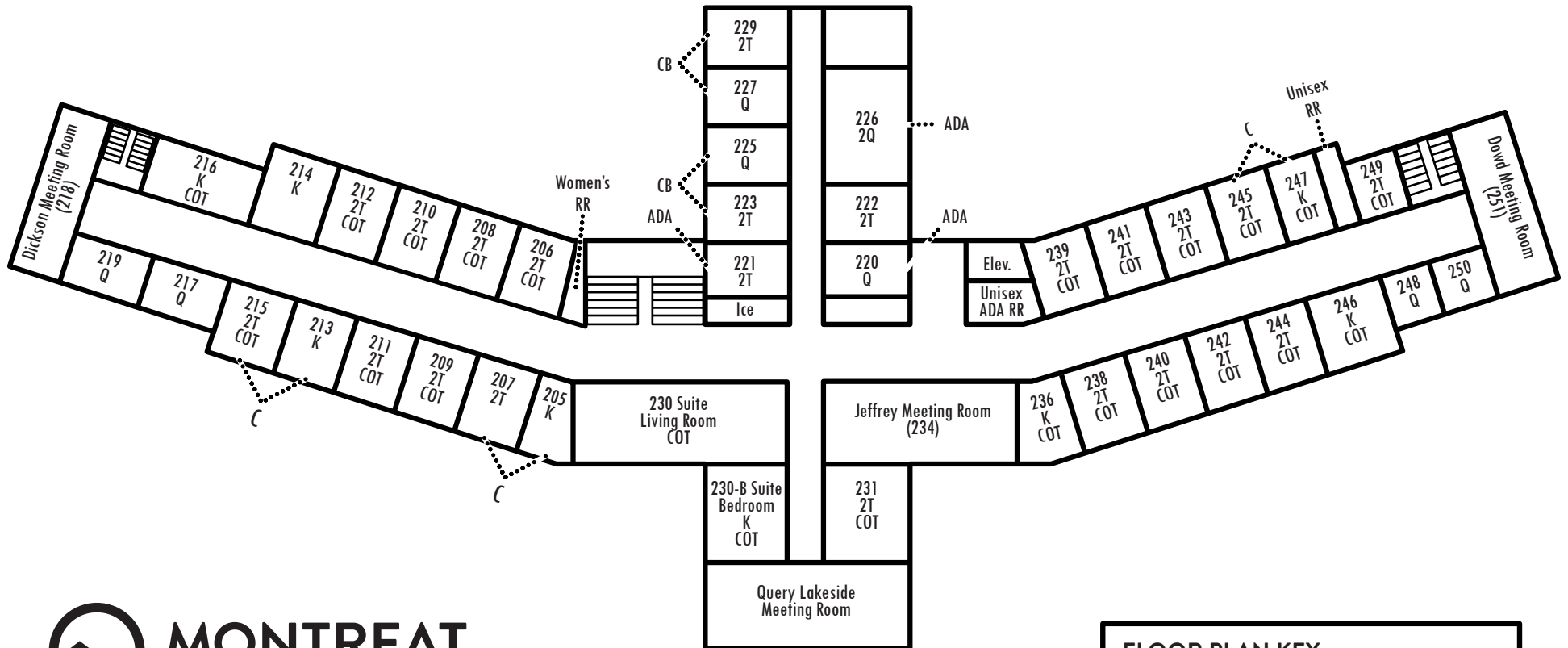
## FLOOR PLAN KEY

- K 1 King Bed
- Q 1 Queen Bed
- 2T 2 Twin Beds
- ADA ADA Room
- C Connecting Room
- CB Connecting Bath
- COT Cot or Crib Accommodation  
(Main/1st Floor = max 9 cots)
- RR Restroom

# Assembly Inn Floor Plan

Second Floor

401 Assembly Drive  
Montreat, NC  
28757



Mailing Address: PO Box 969  
Montreat, NC  
28757

Website: [montreat.org](http://montreat.org)

↓  
Front of Building  
Towards Lake Susan

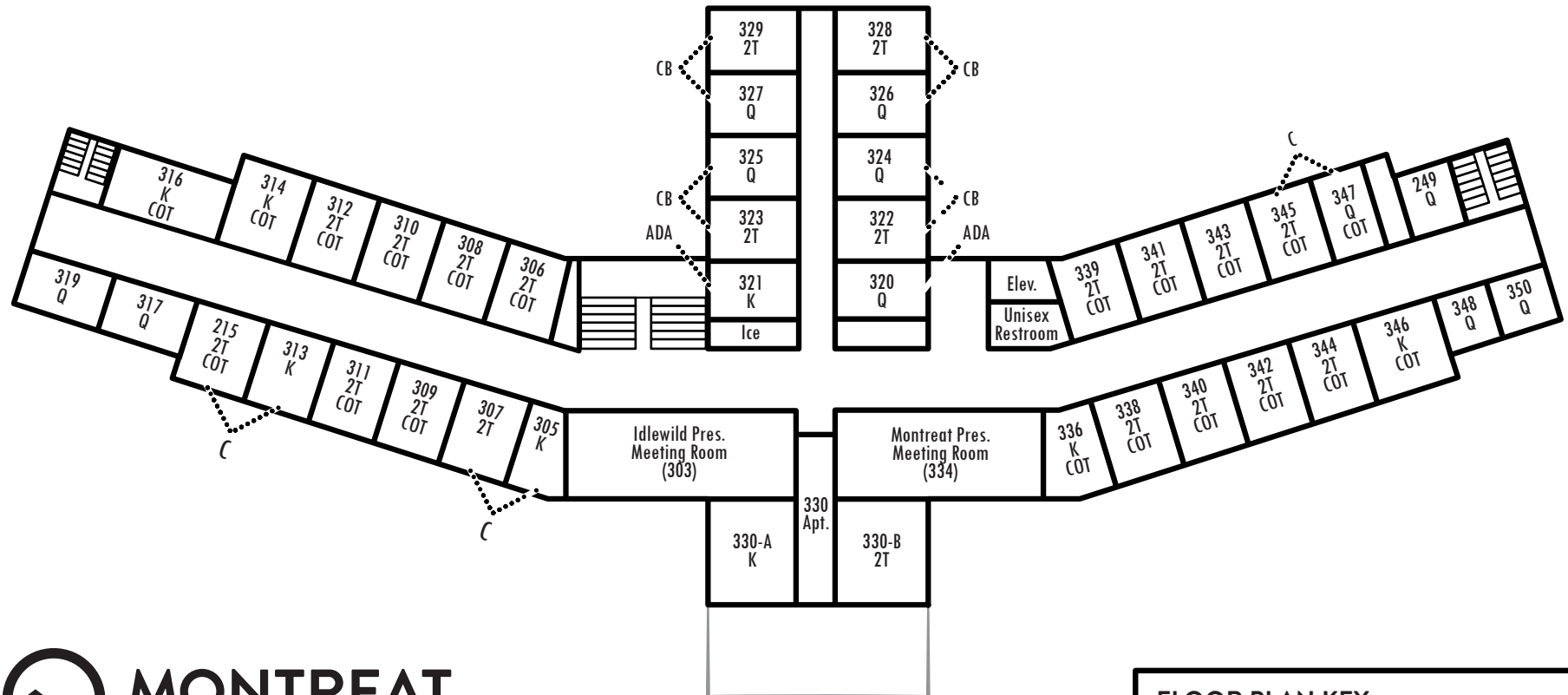
## FLOOR PLAN KEY

- K 1 King Bed
- Q 1 Queen Bed
- 2T 2 Twin Beds
- ADA ADA Room
- C Connecting Room
- CB Connecting Bath
- COT Cot or Crib Accommodation  
(2<sup>nd</sup> Floor = max 23 cots)
- RR Restroom

# Assembly Inn Floor Plan

Third Floor

401 Assembly Drive  
Montreat, NC  
28757



Mailing Address: PO Box 969  
Montreat, NC  
28757

Website: [montreat.org](http://montreat.org)

↓  
Front of Building  
Towards Lake Susan

## FLOOR PLAN KEY

- K 1 King Bed
- Q 1 Queen Bed
- 2T 2 Twin Beds
- ADA ADA Room
- C Connecting Room
- CB Connecting Bath
- COT Cot or Crib Accommodation  
*(3rd Floor = max 20 cots)*
- RR Restroom